

Rhywbeth i gnoi cil drosto

Mae pori gofalus a phriodol yn gallu golygu'r gwahaniaeth rhwng bywyd gwyllt yn ffynnu neu'n diflannu'n llwyr. Mae tir heb ei bori'n ddigonol yn gallu bod mor ddiwerth i fywyd gwyllt â thir wedi'i bori a'i sathru gan ormod o anifeiliaid.

Bydd bywyd gwyllt yn elwa ar baru'r da byw cywir yn ofalus â'r tir, a chynllunio system bori gytbwys wedi'i theilwra'n arbennig i annog a chryfhau cynefinoedd i blanhigion, anifeiliaid, adar a phryfed penodol.



Pori
Natur a
Threftadaeth

Sut alla i gymryd rhan yng ngwaith PONT?

Mae ymaelodi'n rhad ac am ddim ac ar gael i bawb sydd â diddordeb mewn gwella cefn gwlad Cymru er budd bywyd gwyllt drwy bori'n ofalus ac amaethyddiaeth gynaliadwy. Mae cylchlythyr chwarterol ar gael drwy'r post neu e-bost gydag erthyglau ar brosiectau pori, materion pori a marchnata cynnyrch o bori.

Am ragor o wybodaeth, cysylltwch â:
Charles C Morgan, Cydlynnydd PONT



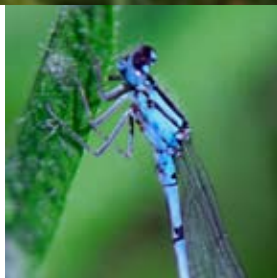
Codi pontydd, helpu natur,
gwella tirweddau



Food for thought

Careful and appropriate grazing can mean the difference between wildlife thriving or disappearing completely. Land which has been undergrazed can be as poor in value to wildlife as land grazed and trampled by too many animals.

Wildlife will benefit from carefully matching the right livestock to the land, designing a balanced grazing system tailor made to encourage and enhance habitats for specific plants, animals, birds and insects.



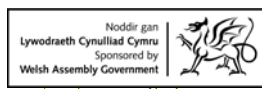
How can I get involved with PONT?

Membership is free and is open to everyone interested in improving the Welsh countryside for wildlife through careful grazing and sustainable agriculture.

A quarterly newsletter is available by post or e-mail with articles on grazing projects, grazing issues and the marketing of produce from grazing.

For more information please contact:
Charles C Morgan, PONT Coordinator

Building bridges, helping
nature, improving landscapes



Codi pontydd, helpu natur, gwella tirweddau

Dyma waith PONT

- to bridge the gap between those responsible for land which needs to be managed for nature and those with livestock to do the job.

PONT (Pori, Natur a Threftadaeth - Grazing, Nature and Heritage) promotes and facilitates the use of livestock to manage land important for wildlife by working with individuals and organisations across Wales.

Gweithio mewn partneriaeth

Sefydlwyd PONT yn 2005, gan y chwaraewyr allweddol ym meysydd cadwraeth natur ac amaethyddiaeth yng Nghymru, sef sefydliadau cadwraeth natur, cymdeithasau brid Gwartheg Duon Cymreig a Chobiau a Merlod Cymreig, Awdurdodau Parc Cenedlaethol, cyrff llywodraeth ac undebau ffermio. Mae gan PONT gysylltiadau â'r Bartneriaeth Cyngor ar Bori yn Lloegr.



This is where PONT comes in

- to bridge the gap between those responsible for land which needs to be managed for nature and those with livestock to do the job.

PONT (Pori, Natur a Threftadaeth - Grazing, Nature and Heritage) promotes and facilitates the use of livestock to manage land important for wildlife by working with individuals and organisations across Wales.

Working in partnership

PONT was founded in 2005, by the key players in nature conservation and agriculture in Wales, these being nature conservation organisations, the Welsh Black Cattle and the Welsh Pony and Cob breed societies, National Park Authorities, government bodies and farming unions. PONT has links with the Grazing Advice Partnership in England.

Bydd PONT:

Yn annog ac yn hwyluso pori er budd bywyd gwylt, tirwedd a threftadaeth ddiwylliannol Cymru.

Yn cysylltu perchenogion da byw â thirfeddianwyr neu reolwyr tir y mae angen stoc arnynt ar Safleoedd o Ddiddordeb Gwyddonol Arbennig (SoDdGA), Safleoedd Bywyd Gwylt a thir a reolir yng nghynllun amaeth-amgylchedd Tir Gofal.

Yn casglu a rhannu gwybodaeth am gynlluniau pori lleol ac enghreifftiau o arfer gorau.

Yn llywio, dylanwadu ac arwain barn a pholisi – yn benodol o ran datblygu a gweithredu cynlluniau a mentrau amaeth-amgylchedd yng Nghymru a'r DU, gan gynnwys polisiau Llywodraeth Cynulliad Cymru heddiw ac yn y dyfodol am faterion amgylcheddol a materion cefn gwlad ehangach.

Yn ceisio cryfhau cadwraeth yng Nghymru a gwaredu dyblygu ymdrech – gyda chymorth sefydliadau eraill o feddwl tebyg.

PONT will:

Encourage and facilitate grazing for the benefit of the wildlife, landscape and cultural heritage of Wales.

Link livestock owners with landowners or land managers in need of stock on Sites of Special Scientific Interest (SSSI's), Wildlife Sites and land managed within the Tir Gofal agri-environment scheme.

Collect and share information about local grazing schemes and examples of best practise.

Inform, influence and guide opinion and policy - particularly with regard to the development and implementation of agri-environment schemes and initiatives within Wales and the UK, including current and future Welsh Assembly Government policies on environmental and wider countryside issues.

Seek to enhance conservation in Wales and eliminate duplication of effort - with the help of other, like-minded organisations.

Building bridges, helping nature, improving landscapes